

Stainless Steel

Everlasting Tough

Grade 316

Stainless steel is a metal alloy, made up of steel mixed with elements such as chromium, nickel, molybdenum, silicon, aluminum, and carbon. Iron mixed with carbon to produce steel is the main component of stainless steel. Chromium is added to make it resistant to rust.

Usage

The main factor in the selection process for stainless steels is corrosion resistance. Careful consideration of the application should be done to enable a choice of grade to an economic minimum. Other considerations such as mechanical properties (strength and toughness). Lobby, LRT and MRT station, building walkway (interior)



Top View Bottom View
Code : XC-MDD1114C
Size : 35x25x4.5mm / Pin ϕ 6x13mm
Grade : 316S/5
Price : RM 5.50/ pc



Top View Bottom View
Code : XC-MDD1345F
Size : 35x25x4.5mm / Pin ϕ 6x13mm
Grade : 316S/5
Price : RM 5.00/ pc



Top View



Bottom View

Code : XC-MDT5006A
Size : 290x35x5mm / Pin:6m
Grade : 316S/5
Price : RM 60.00/ pc



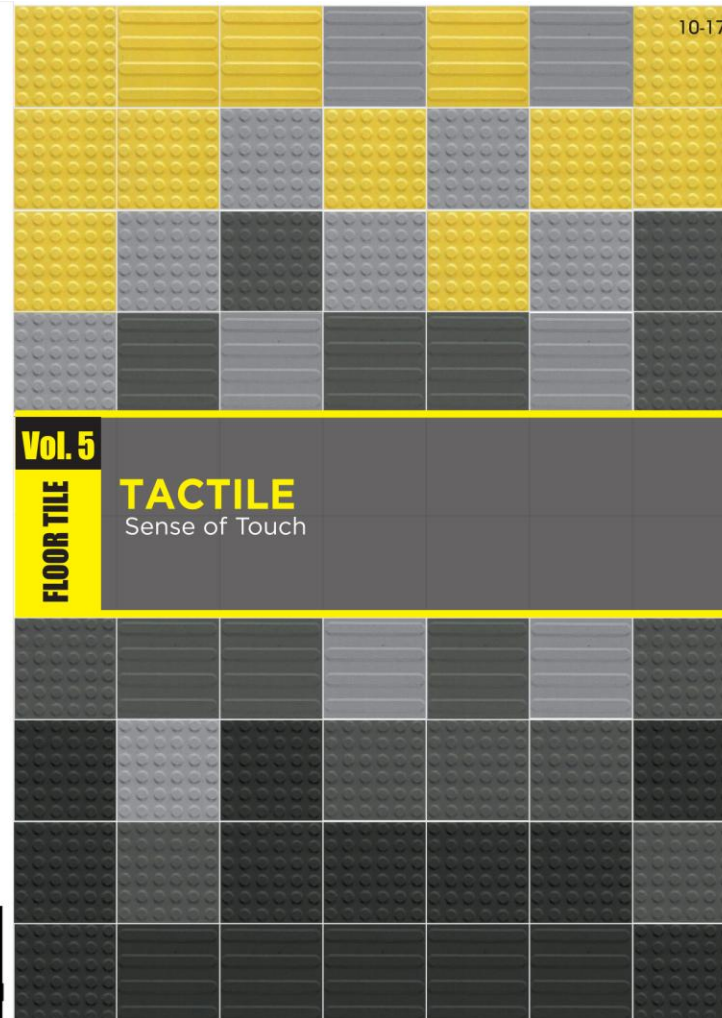
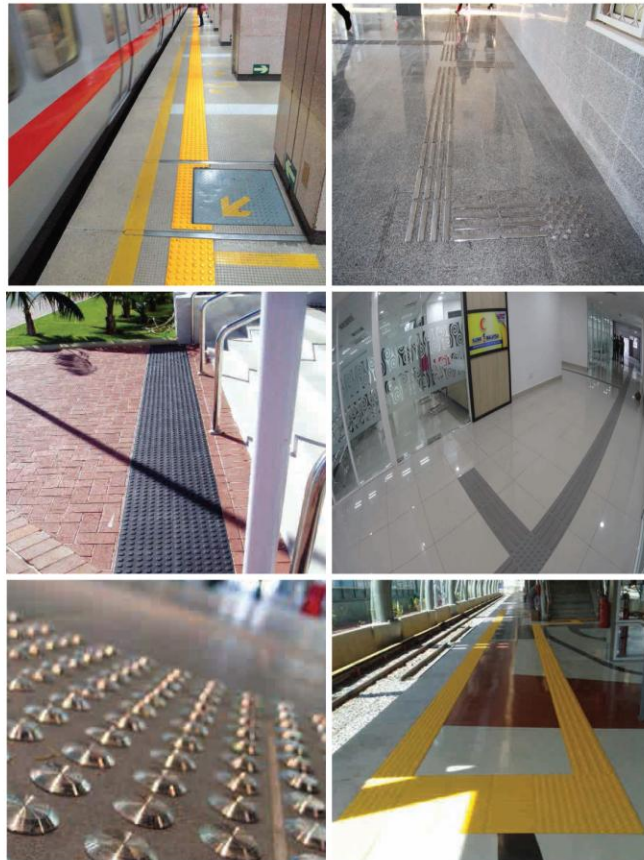
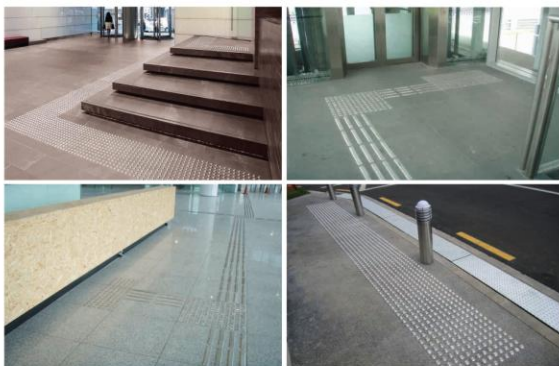
Top View



Bottom View

Code : XC-MDT5067D
Size : 290x35x5mm / Pin:6m
Grade : 316S/5
Price : RM 45.00/ pc

*All Price -Excluding GST



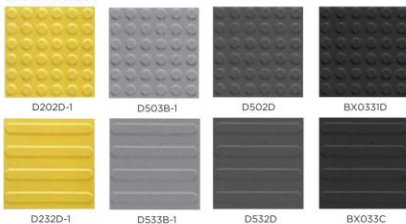
Huani **Homogenous Braille (Tactile)** Sense of Touch



The Ideal Guide Path with a combined aesthetic presentation and functionality. Designed for the sense of touch.



Colour Available :



- Full body porcelain material.
- Our Tac tile are certified and used for Malaysia MRT and LRT project.

Model	Size	Product Code	Colour	Pcs/Ctn	Pcs/sqm	List Price*	
						RM/sqm	RM/pc
	300x300x15mm	D202D-1 D232D-1	Yellow	11	11	165.00	15.00
	300x300x15mm	D503B-1 D533B-1	Light Grey	11	11	187.00	17.00
	300x300x15mm	D502D D532D	Grey	11	11	187.00	17.00
	300x300x15mm	BX0331D BX033C	Black	11	11	253.00	23.00

* All illustration and pictures shown here are artist impression only, while every reasonable effort has been made to provide accurate information.

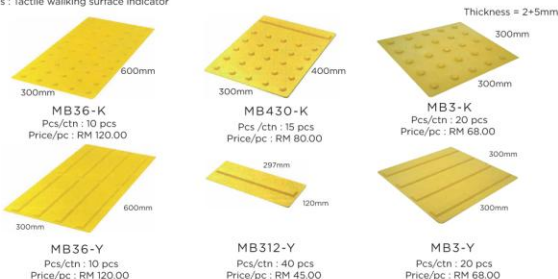
KURIYAMA **Braille tile** M-series



Materials of Braille tile

M-Series Braille Tiles are pre-cast from TWSI acrylic resin. Installed directly onto the floor surface with our original acrylic resin adhesive. Braille tile will be secured tightly. TWSI adhesive is the most durable and have an anti-peeling system.

*TWSi : Tactile walking surface indicator



Cutting

Cutting / Modifying the shape of M series & E-series braille tile can be carried out easily at the construction site which is necessary for uneven surface.



Tile adhesive set (M-Series)

How to mix materials ?

- Base Liquid Resin**
Put one full container quantity of BLR into the white bucket.
- Adhesive Powder**
Put material into the white bucket, and mix until they become uniformly.
- Hardening**
Depending on the temperature of the basement (road) surface, put Hardening into the white bucket and mix until they become uniformly. The required quantity of Hardening depending on the temperature.

Product Code : MBS-300L
Price : RM 480.00/ set

* 1 set adhesive = 2 unit (BLR) + 2 unit Adhesive powder + 8 unit Hardening
* Coverage = 16 sqft / unit

Installation Method - (M-Series)

- Marking
- Double Taping
- Mixing adhesive part 1
- Coating
- Peeling of 1st face
- Mixing adhesive part 2
- Spreading adhesive
- Laying tiles
- Air pocket check (by sounding)
- Treatment of edges
- Peeling of 2nd tape
- Completion

*All Price -Excluding GST

* All illustration and pictures shown here are artist impression only, while every reasonable effort has been made to provide accurate information.

Braille tile (M-series) Indoor Installation at UTC Kuala Terengganu



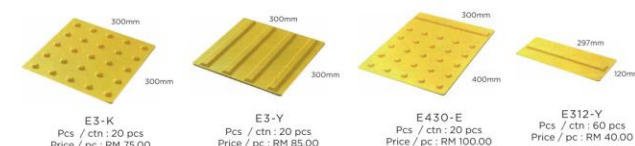
Braille tile (M-series) Outdoor Installation at Japan Street



KURIYAMA **Braille tile** E-series



E-Series Braille are pre-cast from TWSI acrylic resin. It is adhesive ready and can be installed without any liquid adhesion. The E-Series is commonly used in indoor applications where floor cutting is not permitted.



*All Price -Excluding GST

* All illustration and pictures shown here are artist impression only, while every reasonable effort has been made to provide accurate information.