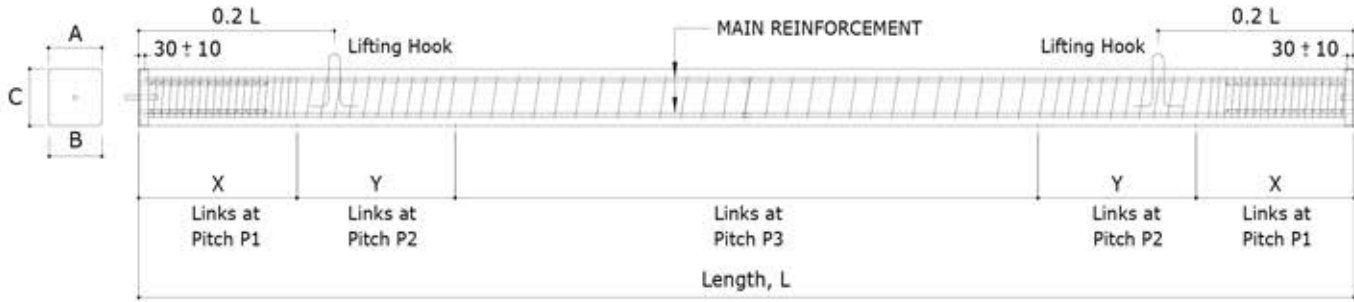




OKA REINFORCED CONCRETE SQUARE PILES TO JKR CLASS 1 SPECIFICATIONS

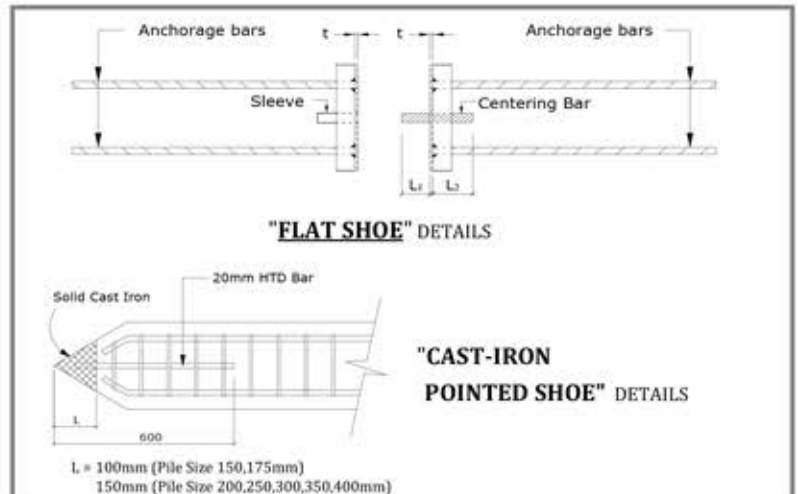


JKR "Class 1" RC Pile Details

Pile Nominal Size A x C (mm x mm)	Pile Length L (m)	Concrete Grade (N/mm ²)	Maximum Axial Working Load (kN)	JKR Recommended Axial Working Load (kN)	Nominal Pile Dimensions			Main Reinforcement (No / Dia)	Links (Links Details to Table below or of Equivalent)						
					A (mm)	B (mm)	C (mm)		Pile Head		Transition		Pile Body		
									Wire Details	P1 (mm)	X (mm)	P2 (mm)	Y (mm)	Wire Details	P3 (mm)
150 X 150	3,6	45	332	200	153	147	150	4 T 10	R6.0	40	450	40 - 75	450	R6.0	75
175 X 175	3,6	45	455	300	178	172	175	4 T 12	R6.0	40	525	40 - 75	525	R6.0	75
200 X 200	3,6	45	570	350	203	197	200	4 T 12	2R6.0	65	600	65 - 85	600	R6.0	85
250 X 250	3,6,9,12	45	910	500	253	247	250	4 T 16	2R6.0	60	750	60 - 75	750	R6.0	75
300 X 300	3,6,9,12	45	1320	800	303	297	300	4 T 20	2R6.0	55	900	55 - 70	900	R6.0	70
350 X 350	3,6,9,12	45	1730	1150	353	347	350	4 T 20	2R6.5	55	1050	55 - 65	1050	R6.5	65
400 X 400	3,6,9,12	45	2310	1450	403	397	400	4 T 25	2R6.5	50	1200	50 - 60	1200	R6.5	60

JKR "Class 1" Joint Details

"FLAT SHOE" DETAILS					
Pile Size (mm)	Joint Plate Thickness t (mm)	Centering Bar			Anchorage Bars Details
		Dia	L1	L2	
150 X 150	10	16	75	150	4 T10 x 320mm
175 X 175	10	16	75	150	4 T12 x 384mm
200 X 200	15	32	100	200	4 T12 x 384mm
250 X 250	15	32	100	200	4 T16 x 512mm
300 X 300	15	32	100	200	4 T20 x 640mm
350 X 350	15	32	100	200	4 T20 x 640mm
400 X 400	15	32	100	200	4 T25 x 800mm



In view of continual review and improvement, OKA reserves the right to update/amend the above specification without notice. Please check with us when you place your orders.